

# SPECIFICATIONS

## Optical & Imaging System

Top View Camera	4 Mpx high speed color camera
Lighting	Multi-phase RGB+W LED
Optical Resolution	10 or 15 $\mu$ m
Imaging Method	Dynamic Imaging

## Imaging/Inspection Speed

15 $\mu$ m	120 cm <sup>2</sup> /sec (18.6 in <sup>2</sup> /sec)
10 $\mu$ m	60 cm <sup>2</sup> /sec (9.3 in <sup>2</sup> /sec)

## Pre-/Post-Reflow Inspection Functions

Component	Missing, Tombstoning, Billboarding, Polarity, Rotation, Shift, Wrong Marking (OCV), Defective, Upside Down, Extra Component
Solder Joint	Excess Solder, Insufficient solder, Bridging, Through-hole Pins, Lifted Lead, Golden Finger Scratch/Contamination

## X-Y Table & Control

Ballscrew + AC servo with motion controller	
X-Y Axis Resolution	1 $\mu$ m

## PCB & Conveyor System

Min. PCB Size	50 x 50 mm (1.97 x 1.97 in)	
	TR7700 SIII DT	TR7700L SIII DT
Max. PCB Size	330 x 250 mm (13.0 x 9.84 in)	510 x 460 mm (20.1 x 18.1 in)
Max. PCB Thickness	3 mm (0.12 in)	
Max. PCB Weight	3 kg (6.61 lbs)	
PCB Carrier/Fixing	Motor Driven Clamping	
Clearance		
Top	25 mm (0.98 in)	25 mm (0.98 in)
Bottom	100 mm (3.94 in)	50 mm (1.97 in)
Edge	3 mm (0.12 in)	3 mm (0.12 in)
Dimensions (W) x (D) x (H)	800 x 1100 x 1350 mm (31.5 x 43.3 x 53.2 in)	980 x 1290 x 1400 mm (38.6 x 50.8 x 55.1 in)
Weight	340 kg (750 lbs)	385 kg (849 lbs)
Power Requirement	200 - 240 V, single phase, 50/60 Hz 2 kVA	

## Options

Barcode Scanner, Repair Station, Offline Editor, OCR, TRI's Yield Management System (YMS), YMS Lite, Support Pin



Specifications are subject to change without notice. All trademarks are the property of their owners.

The following are trademarks or registered trademarks of Test Research, Inc. (TRI)

TRI 德律 R TRI INNOVATION

The absence of a product or service name or logo from this list does not constitute a waiver of TRI's trademark or other intellectual property rights concerning that name or logo. All other trademarks and trade names are the property of their owners.



## Test Research, Inc.

### Headquarters

7F., No.45, Dexing West Rd.,  
Shilin Dist., Taipei City  
11158, Taiwan  
TEL: +886-2-2832-8918  
FAX: +886-2-2831-0567  
E-Mail: sales@tri.com.tw  
http://www.tri.com.tw

### Linkou, Taiwan

No.256, Huaya 2nd Rd.,  
Guishan Shiang, Taoyuan  
County 33383, Taiwan  
TEL: +886-2-2832-8918  
FAX: +886-3-328-6579

### Hsinchu, Taiwan

7F., No.47, Guangming 6th  
Rd., Zhubei City, Hsinchu  
County 30268, Taiwan  
TEL: +886-2-2832-8918  
FAX: +886-3-553-9786

### Shenzhen, China

5F.3, Guangxia Rd., Shang-mei-lin  
Area, Fu-Tian District, Shenzhen,  
Guangdong, 518049, China  
TEL: +86-755-83112668  
FAX: +86-755-83108177  
E-mail: shenzhen@cn.tri.com.tw

### Suzhou, China

B Unit, Building 4, 78 Xinglin  
St., Suzhou Industrial Park,  
215123, China  
TEL: +86-512-68250001  
FAX: +86-512-68096639  
E-mail: suzhou@cn.tri.com.tw

### Shanghai, China

Room 6C, Building 14, Aly. 470,  
Guiping Rd., Xuhui Dist.,  
Shanghai, 200233, China  
TEL: +86-21-54270101  
FAX: +86-21-64957923  
E-mail: shanghai@cn.tri.com.tw

### USA

1923 Hartog Drive  
San Jose, CA 95131 U.S.A  
TEL: +1-408-567-9898  
FAX: +1-408-567-9288  
E-mail: triusa@tri.com.tw

### Europe

O'Brien Strasse 14  
91126 Schwabach  
Germany  
TEL: +49-9122-631-2127  
FAX: +49-9122-631-2147  
E-mail: trieuropa@tri.com.tw

### Japan

2-9-9 Midori, Sumida-ku,  
Tokyo, 130-0021 Japan  
TEL: +81-3-6273-0518  
FAX: +81-3-6273-0519  
E-mail: trijp@tri.com.tw

### Korea

No.207 Daewoo-Technopia,  
768-1 Wonsi-Dong, Danwon-Gu,  
Ansan City, Gyeonggi-Do, Korea  
TEL: +82-31-470-8858  
FAX: +82-31-470-8859  
E-mail: trik@tri.com.tw

### Malaysia

C11-1, Ground Floor, Lorong  
Bayan Indah 3 Bay Avenue,  
11900 Bayan Lepas Penang,  
Malaysia  
TEL: +604-6461171  
E-mail: trimy@tri.com.tw

C-7700 SIII DT-EN-1405



# TR7700 SIII DT SERIES



DESKTOP AUTOMATED  
OPTICAL INSPECTION

# TR7700 SIII DT FEATURES

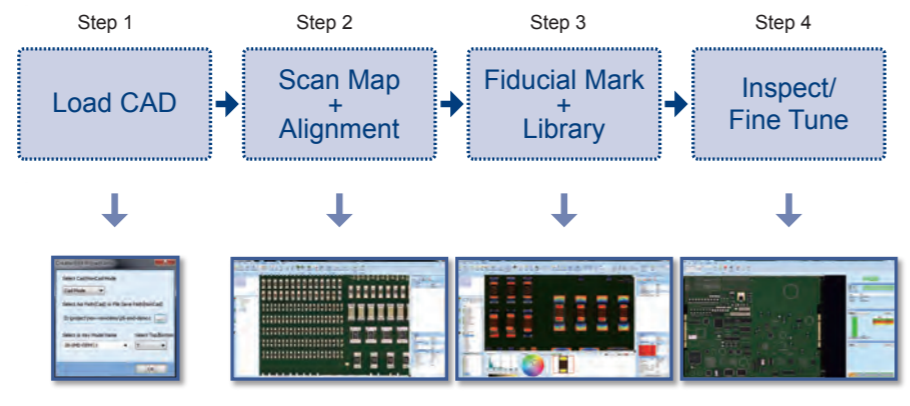
## Premium Desktop AOI with World Class Performance

TR7700 SIII DT captures high precision full PCB panel images in unprecedented detail using TRI's exclusive multi-phase lighting. Next generation inspection software combines excellent defect detection and easy programming into a state-of-the-art desktop AOI solution.

## Intelligent Easy Programming Interface

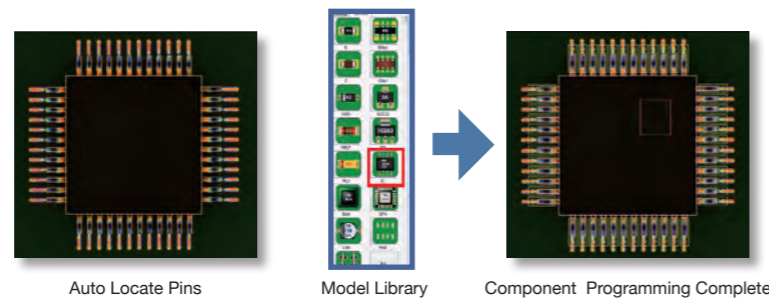
New intelligent programming process significantly reduces programming time using automated component library and integrated board warp compensation.

### Programming Flowchart



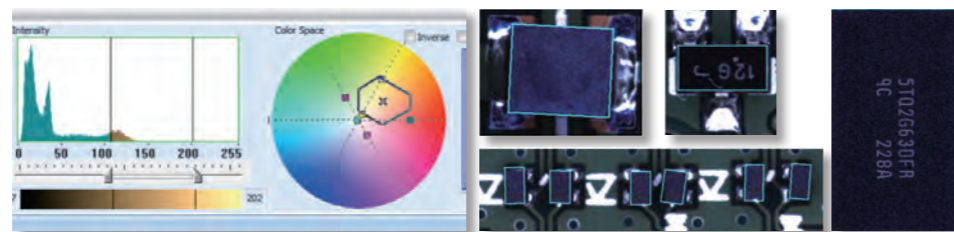
## Auto Library + Model Library

Auto Library speeds up programming by automatically allocating inspection windows for IC leads.

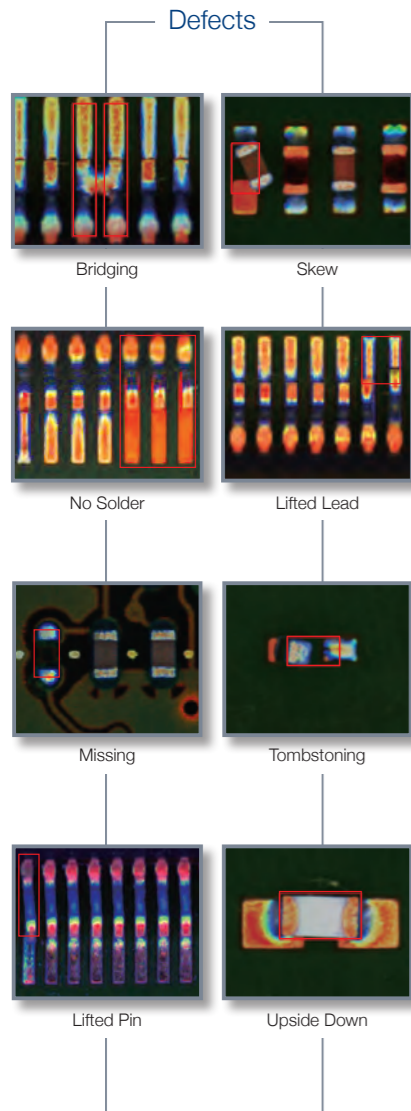


## New Color Space Algorithms

TRI's new adaptive algorithms use color space processing to increase inspection accuracy, reduce false calls and improve inspection results while reducing time necessary for inspection fine tuning and the number of alternative images required.

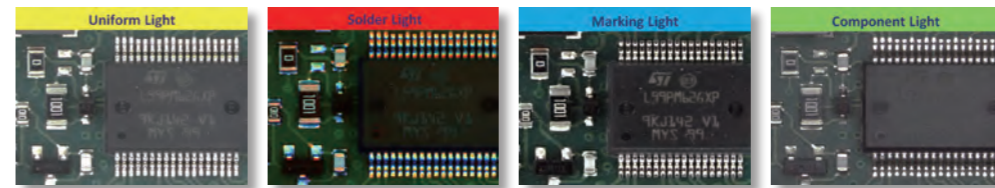


Color Differentiation Analysis for Black Resin Parts



## High Speed with Multi-phase Lighting

Four individual lighting phases improve inspection of individual defect types using specialized lighting conditions. High speed camera allows inspection at constant speed even with multiple lighting phases.



## Flexible multi-board Merging & Speedy Inspection

- Simultaneous access to multiple component information for easy programming.
- Saves multi-fiducial mark scanning time for multi-board programs.

## Auto-clamping Conveyor System

Single button PCB loading and unloading reduces operator workload and improves board loading time.

## High Speed Ballscrew X-Y Motion Drive

Servo motor with high precision control helps deliver stable and reliable inspection results.

## SMT Line Integration

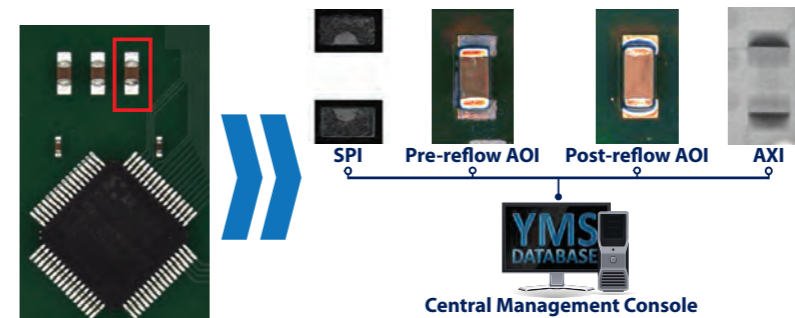
Centralized production line management increases operator productivity and response time. TRI's integrated solution includes the following four components.

### • Offline Editor

This application allows for centralized independent adjustment and fine tuning of inspection algorithms on previously scanned images while providing immediate feedback. The completed program can then be uploaded to the in-line inspection machines to improve inspection stability and accuracy.

### • YMS Lite

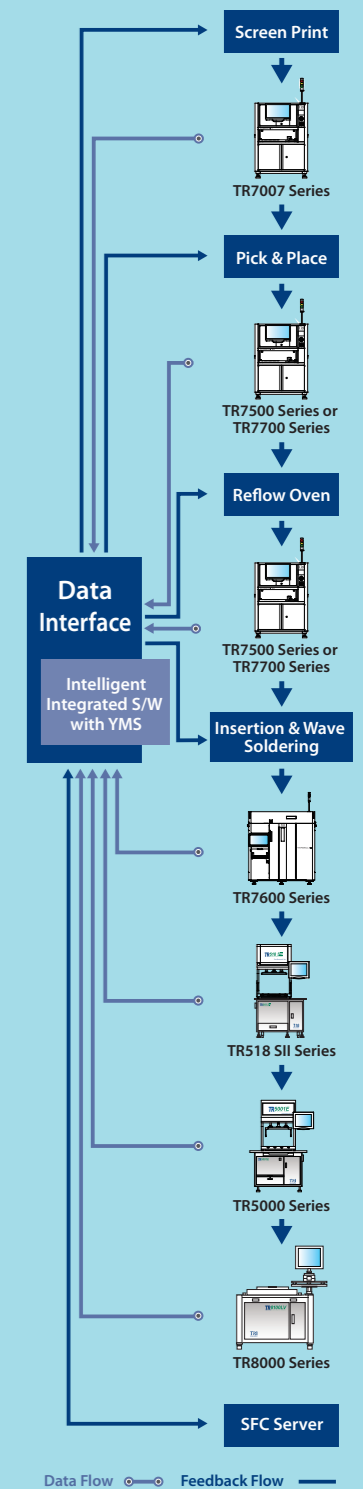
TRI's Yield Management System links inspection data from SPI, AOI and AXI systems to trace defect roots throughout the PCB assembly line. Modular architecture provides centralized inspection management, real time defect monitoring with analysis and defect knowledge management necessary to identify problems and implement solutions to maximize production yields.



### • Quality Validation

Fully automated collection of good/failed images from a complete production run allows testing, tuning and verification of adjusted program parameters without reloading tested boards. This allows engineers to save inspection time when fine tuning and significantly speeds up New Product Introduction (NPI).

## Yield Management System\*



- Inspection results and data integration
  - Real time SPC and production yield management
  - Quality reports and closed loop tracking
  - Support defect component analysis and improvements
  - Knowledge Management (KM)
  - Productivity and Quality Management
- \* Optional