

SPECIFICATIONS

Optical & Imaging System

Top View Camera	4MP color camera
Lighting	RGB+W LED
Optical Resolution	10 or 15 µm
Imaging Method	Dynamic Imaging

Imaging/Inspection Speed

15 µm	120 cm ² /sec (18.6 in ² /sec)
10 µm	60 cm ² /sec (9.3 in ² /sec)

Pre-/Post-Reflow Inspection Functions

Component	Missing, Tombstone, Billboard, Polarity, Skew, Marking, Defective
Solder Joint	Insufficient/Excess Solder, Bridge, Through-hole Pins, Lifted Lead, Golden Finger Scratch/Contamination

X-Y Table & Control

Ballscrew + AC servo with DSP-based motion controller	
X-Y Axis Resolution	1 µm

PCB & Conveyor System

PCB Size	50 x 50 mm-510 x 460 mm (1.97 x 1.97 in-20 x 18 in)
PCB Thickness	0.5-5 mm
PCB Transport Height	880-920 mm (34.6-36.2 in)
Max. PCB Weight	3 kg (6.61 lbs)
PCB Carrier/Fixing	Step motor driven & pneumatic clamping
Clearance	
Top	25 mm (0.98 in)
Bottom	40 mm (1.57 in)
Edge	5 mm (0.19 in) [3 mm optional]

Dimensions

Dimensions	(W) 1000 mm x (D) 1500 mm x (H) 1500 mm (not including signal tower, signal tower height: 520 mm) (W) 39.3 in x (D) 59.0 in x (H) 59.0 in
Weight	900 kg (1984 lbs)
Power Requirement	200-240 V, single phase, 50/60 Hz 3 kVA
Air Requirement	0.6 MPa (87 psi)

Options

Barcode Scanner, Repair Station, Offline Editor, OCR, OCV & TRI's Yield Management System (YMS), YMS Lite, Support Pin

Specifications are subject to change without notice. All trademarks are the property of their owners.

The following are trademarks or registered trademarks of Test Research, Inc. (TRI)



The absence of a product or service name or logo from this list does not constitute a waiver of TRI's trademark or other intellectual property rights concerning that name or logo. All other trademarks and trade names are the property of their owners.

Test Research, Inc.

Headquarters

7F., No.45, Dexing West Rd.,
Shilin Dist., Taipei City
11158, Taiwan
TEL: +886-2-2832-8918
FAX: +886-2-2831-0567
E-Mail: sales@tri.com.tw
http://www.tri.com.tw

Linkou, Taiwan

No.256, Huaya 2nd Rd.,
Guishan Shiang, Taoyuan
County 33383, Taiwan
TEL: +886-2-2832-8918
FAX: +886-2-2832-2703

Hsinchu, Taiwan

7F., No.47, Guangming 6th
Rd., Zhubei City, Hsinchu
County 30268, Taiwan
TEL: +886-3-553-9796
FAX: +886-3-553-9786

Shenzhen, China

5F.3, Guangxia Rd., Shang-mei-lin
Area, Fu-Tian District, Shenzhen,
Guangdong, 518049, China
TEL: +86-755-83112668
FAX: +86-755-83108177
E-mail: shenzhen@cn.tri.com.tw

Suzhou, China

63 Huoju Road, Suzhou New
District, 215009, China
TEL: +86-512-68250001
FAX: +86-512-68096639
E-mail: suzhou@cn.tri.com.tw

Shanghai, China

W. 6F., Building18, 481 Guiping
Road, Shanghai, 200233, China
TEL: +86-21-54270101
FAX: +86-21-64957923
E-mail: shanghai@cn.tri.com.tw

USA

1923 Hartog Drive
San Jose, CA 95131 U.S.A
TEL: +1-408-567-9898
FAX: +1-408-567-9288
E-mail: triusa@tri.com.tw

Europe

O'Brien Strasse 14
91126 Schwabach
Germany
TEL: +49-9122-631-2127
FAX: +49-9122-631-2147
E-mail: trieuropa@tri.com.tw

Japan

2-9-9 Midori, Sumida-ku,
Tokyo, 130-0021 Japan
TEL: +81-3-6273-0518
FAX: +81-3-6273-0519
E-mail: trijp@tri.com.tw

Korea

No.207 Daewoo-Technopia,
768-1 Wonsi-Dong, Danwon-Gu,
Ansan City, Gyeonggi-Do, Korea
TEL: +82-31-470-8858
FAX: +82-31-470-8859
E-mail: trikr@tri.com.tw

Malaysia

C11-1, Ground Floor, Lorong
Bayan Indah 3 Bay Avenue,
11900 Bayan Lepas Penang,
Malaysia
TEL: +604-6461171
E-mail: trimy@tri.com.tw

C-7700 SIII-EN-1304



TR7700 SIII SERIES

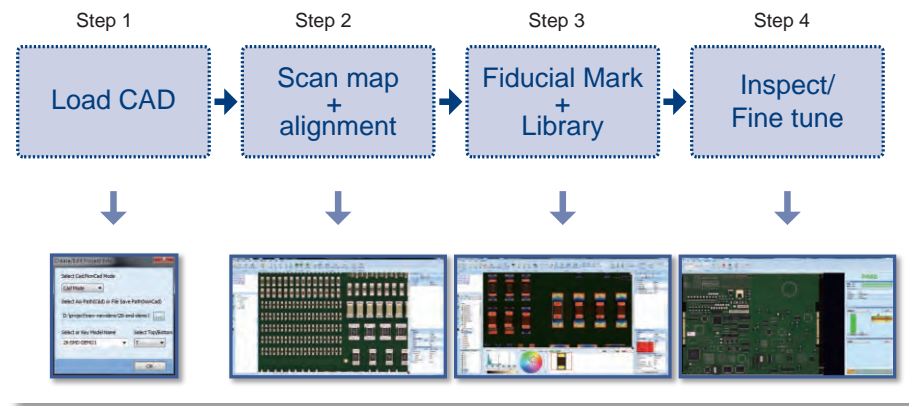


AUTOMATED
OPTICAL INSPECTION

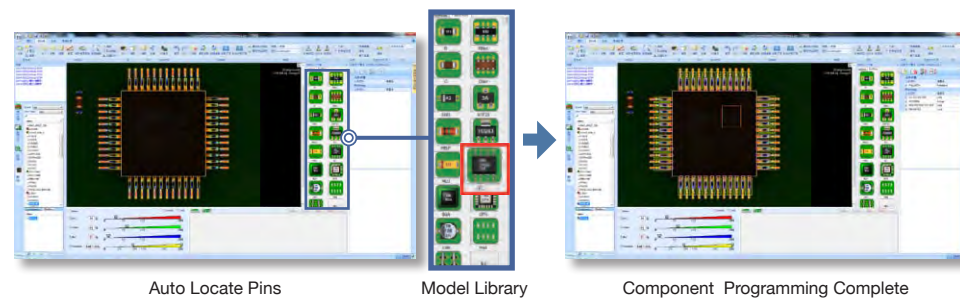
TR7700 SIII FEATURES

Intelligent Easy Programming Interface

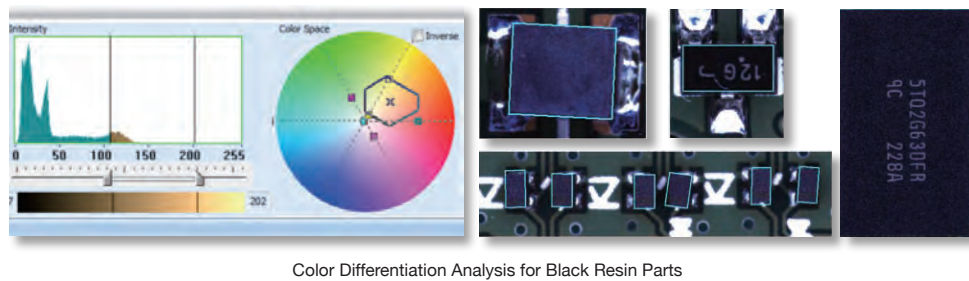
Programming Flowchart



Auto Library + Model Library



New Color Algorithm: Improves inspection results and reduces false calls

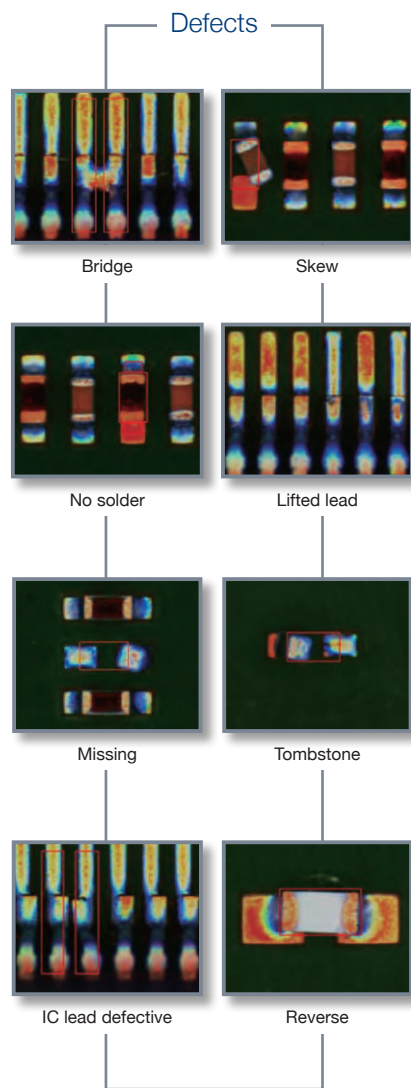
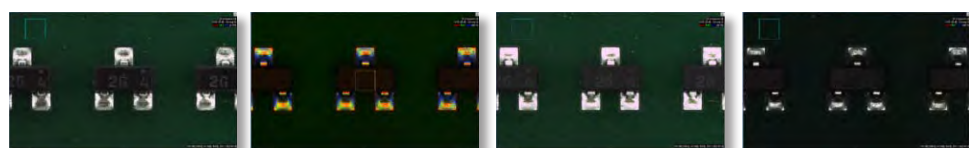


High Speed with Multi-phase Lighting

- High speed
 - 15 μm : 120 cm^2/sec (18.6 in^2/sec)
 - 10 μm : 60 cm^2/sec (9.3 in^2/sec)

Multi-phase

Four individual lighting phases enable inspection of more defect types.

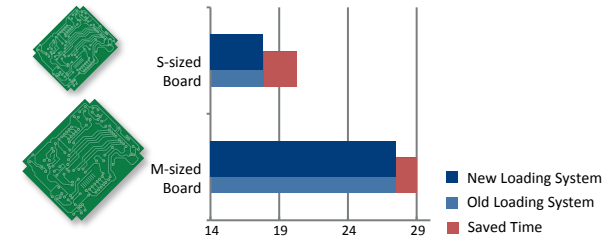


Flexible multi-board Merging & Speedy Inspection

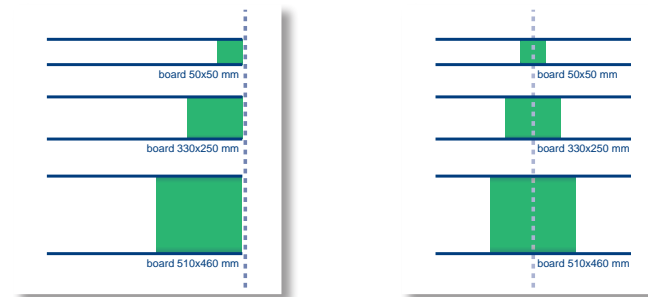
- Simultaneous access to multiple component information for easy programming.
- Saves multi-fiducial mark scanning time for multi-board programs.

Intelligent Auto Conveyor System (IACS)

- Reduced load & unload time (Saves 0.5-2.5 sec. per board.)

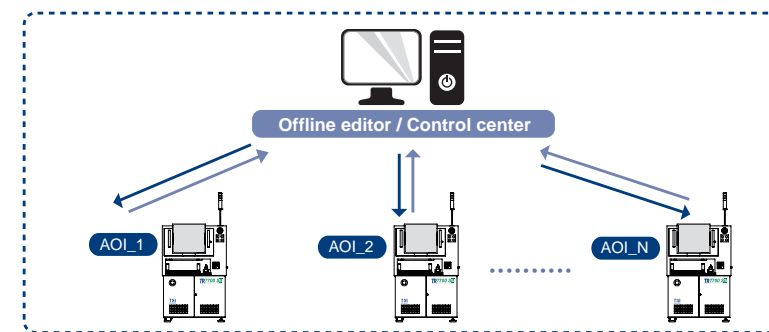


- Automatic adjustment of conveyor speed based on board weight. (Saves time for manual adjustment and training.)
- Automatic conveyor width adjustment (Optical direct adjustment system without returning to default position.)

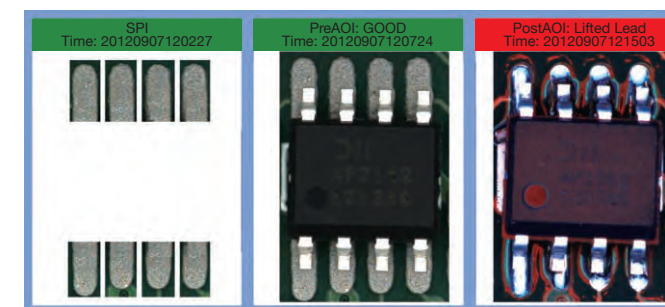


Production Line Integrated Solution

- Offline editor
- Control center

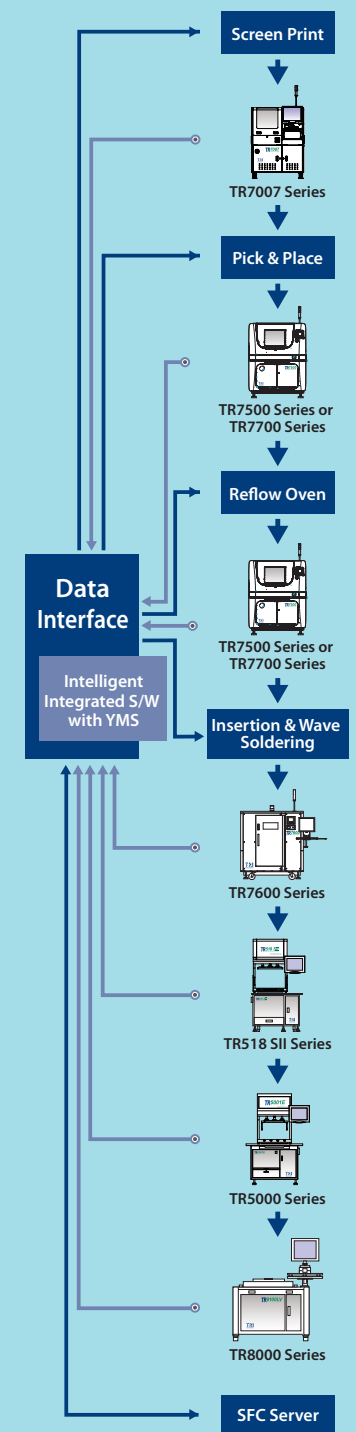


- YMS Lite
Post-reflow AOI verification of failed components can incorporate TRI SPI & pre-reflow AOI image data for improved analysis of failed components.



- QV (Quality Validation): Automated good/failed image collection allows testing and verification of adjusted program parameters.

Yield Management System*



Data Flow Feedback Flow

- Testers enable process capability control
- Real-time defect information integration & analysis
- Defect knowledge management

* Optional