

THE NEW GENERATION of Selective Soldering Machines

WORLDWIDE NETWORK. INNOVATIVE PRODUCTS.
PERFECT SERVICE. GERMAN QUALITY.



InterSelect GmbH | Perläckerstraße 11 | D-76767 Hagenbach

IS – I 460S Selective Soldering InLine System from InterSelect

All our machines are designed to meet the needs of lean manufacturing in combination with flexibility and through put at minimal cost. The new generation of selective soldering machine is controlled via embedded PC, CANopen technology and by InterSoft, a Windows based software. Our revolutionary **IS-PhotoScan** offline programming system is a “Point and Click” PCB image package, also Windows based. That allows the operator to complete a program in a matter of minutes instead of hours.



These entry level machines are newly designed with more than 10 years experience in manufacturing of selective soldering machines. All machines are equipped with our inert hot nitrogen atmosphere for the soldering process and to assist the prevention of oxidation. Each solder pot has this inert atmosphere. The travelling X, Y, Z moving solder pot system is since a long time already installed in many machines. These machines is equipped with a unique top side designed preheating system, controlled by a pyrometer. All process parameters are controlled and monitoring for data take over.

IS – I – 460 S

Technical details:

Automatic In Line selective soldering machine

Max. board size:	18" x 18" (460 x 460 mm)
Machine dimension:	1100x1000x1300
Min. neighbor component clearance:	1.5 - 3 mm 0,06" – 0,12"
Pre-heater:	Top: 1,5 - 5.5 KW
solder module with capacity of:	12 kg 22 lbs of each solder module
Pressure (Nitrogen):	4 - 6 bar 60 – 90 psi
Flux system:	Micro Drop Jet maintenance free
Lead free titanium solder pot and pump system:	Suitable for all alloys
Heat up time:	60 minute
Max. temperature:	320°
Nitrogen consumption and purity:	1.5 – 3 m3/h, adjustable 99,99%
Air pressure:	3 bar 60 psi

DAVUM



DAVUM
ÉQUIPEMENTS

30, rue du Bois Moussay

93240 STAINS

FRANCE

Tél : +33(0)1 48 36 84 01

Fax : +33 (0)1 48 36 14 62



the best machine with unique features in this class

unique	Footprint and heating area compare to board size and all other machines
unique	Footprint 1,10x1,00 meter
unique	board size up to 460x460mm expandable up to 920mmx460mm
unique	top side preheater 460x460mm adjustable 1,5 to 5,5 KW
unique	Standard and option compare to machines in it's class
Standard	PC on board Window XP, NT, Windows 7
Standard	Network-compatible , telemaintenance , Windows based
Standard	Automatic laser wave height control and correction
Standard	Laser Pyrometer control with profiling
unique	lean manufacturing in combination with flexibility and through put at minimal cost
Standard	Mini wave for small distance to neighbor components
Option but unique	Multi wave for fast cycle time
Standard	IS-PhotoScan offline programming software Window XP, NT, Windows 7

DAVUM



DAVUM
ÉQUIPEMENTS

30, rue du Bois Moussay

93240 STAINS

FRANCE

Tél : +33(0)1 48 36 84 01

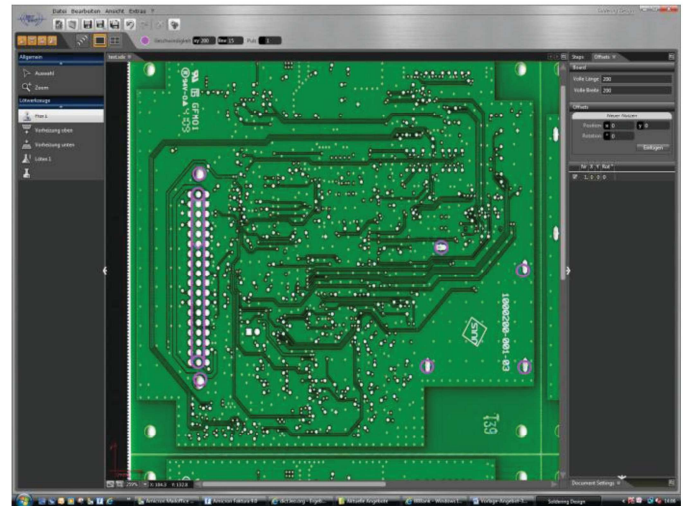
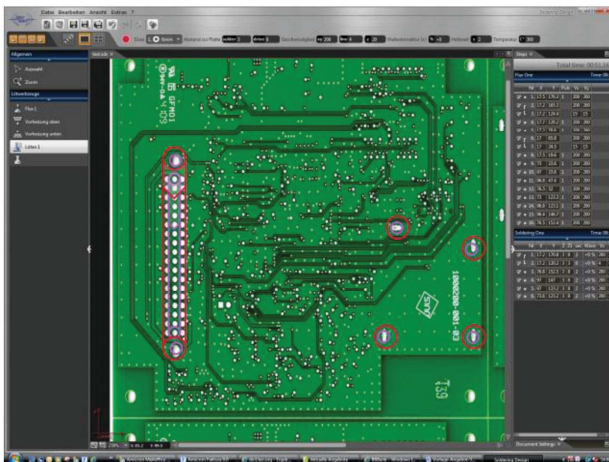
Fax : +33 (0)1 48 36 14 62

THE NEW GENERATION
of Selective Soldering Machines
WORLDWIDE NETWORK. INNOVATIVE PRODUCTS.
PERFECT SERVICE. GERMAN QUALITY.



Revolutionary Inter-PhotoScan offline programming

Programming is done in minutes, scan the board



DAVUM



DAVUM
ÉQUIPEMENTS

**30, rue du Bois Moussay
93240 STAINS**

FRANCE

Tél : +33(0)1 48 36 84 01

Fax : +33 (0)1 48 36 14 62



Solution configuration

IS – I 460S Selective Soldering System from InterSelect

IS – M 460S Modular Selective Soldering System from InterSelect

Selective soldering unit



460 S InLine

with automatic motor-driven conveyor adjustment, Micro drop jet fluxer nozzle, wave height check and IS-PhotoScan software.

Longer board size up to 920x460mm



460 S InLine

with automatic motor-driven conveyor adjustment, micro drop jet fluxer nozzle, wave height check, Pyrometer, IS-PhotoScan software, camera and top side heater

Longer board size up to 920x460mm



Fluxing unit



Preheat unit





Modular possibilities: for boards 460x460mm

Long version 920X460 mm is an option



Variant 1: IS-I-460S as individual soldering module

Ideally suited for low throughput requirements or during introduction phase of a new product. The fluxing, preheat and soldering process are performed successively, resulting in longer cycle times



Variant 2: two IS-I-460S soldering modules

Ideally suited for high throughput requirements. This variant results in a reduction of cycle time

parallel processing with two soldering units

use of optimum solder nozzle dimensions small solder nozzle in

the first machine for solder joints with small clearances and large solder nozzle

in the second machine for multiple-row connectors, consequently

throughput of boards will be at least doubled compared to variant 1

DAVUM



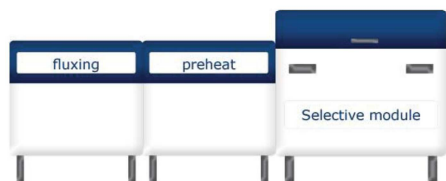
 **DAVUM**
ÉQUIPEMENTS

**30, rue du Bois Moussay
93240 STAINS**

FRANCE

Tél : +33(0)1 48 36 84 01

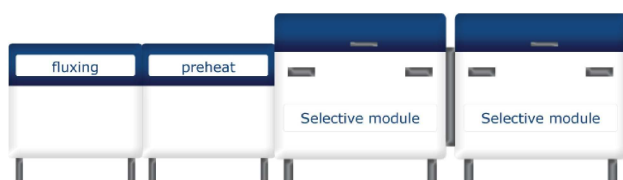
Fax : +33 (0)1 48 36 14 62



Variant 3: fluxing module, preheat module and SelectiveLine soldering module

Ideally suited for high mass assemblies which need to be preheated, or need long preheat cycles.

Fluxing, preheat and soldering are performed simultaneously. Because the soldering process usually is the most time-consuming process, it determines the cycle time



Variant 4: fluxing module, preheat module and two IS-I-460S soldering modules

Ideally suited for high mass assemblies, as described in variant 2 and 3,

DAVUM



DAVUM
ÉQUIPEMENTS

30, rue du Bois Moussay

93240 STAINS

FRANCE

Tél : +33(0)1 48 36 84 01


Fax : +33 (0)1 48 36 14 62



Spare parts:

	description	Part no.
	maintenance –Set 1 x Cleaning- Set for 10 x wettable nozzles, your choice 4 pump bearings 2 pump belts 1 Micro Drop Valve 1 Body for nozzles	Spare part kit 1

Option:

	Automatic solder pot wire feeding system	004 - 02
	Nitrogen generator including 270 Liter buffer tank	N2 001-01
	One-Day service engineer max. 8 working hours	IS 009-01
	Export Packing (Vacuum) Nett price	IS 009-02

DAVUM



DAVUM
ÉQUIPEMENTS

**30, rue du Bois Moussay
93240 STAINS**

FRANCE

Tél : +33(0)1 48 36 84 01

Fax : +33 (0)1 48 36 14 62