

PSB 700 V70 TWIN

Fully automatic system for process safe fine cleaning of two screens, stencils or PumpPrints in one cleaning cycle from contaminations such as SMD-paste, SMD-adhesive, flux residues, oil, dust or grease.

Part No. 0905700-PSB-V70

Stencil cleaning system

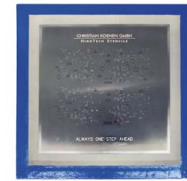


The situation

Efficient cleaning of screens and stencils is prerequisite for reproducible quality and thereby a perfect all over process in picking and placing. Due to the twin loading capacity of the process the **kolb PSB700 V70 TWIN** allows - in cooperation with modern aqueous detergents with hardly any unpleasant odors – highest cleaning efficiency and a widest possible process window. The system is economic, efficient, with high throughput and low running cost and can be installed at the production line.

The advantages of PSB700 V70 TWIN

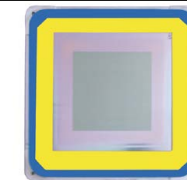
- Capacity: 2 screens / stencils 640 x 640 mms (25" x 25") or 710 x 585 mms (28" x 23").
- Very short cycle times, depending on detergent and contamination.
- Comfortable push-one-button operation.
- Fully automatic 4step process: cleaning, MediumWipe®, rinsing, compression® drying.
- Two tank combi system with two separate circuits.
- ClosedLoop reprocessing of cleaning and rinsing fluids as standard feature.
- VA Duplex wash cart with two fixtures.
- Vertical four stage rotor system.
- Permanent rotor run control as an option.
- Process and service intervals PLC controlled.
- Event issuing and software control via touch screen.
- PLC data recording and importing by scanner possible.
- Fine filter system 10µm for the cleaning process.
- Water-free operation possible: Due to the separate double tank configuration the system can operate with suitable cleaning / rinsing detergents for rinsing.
- Made of stainless steel, process sections are made of electrolysis resistant elements.
- Installation close to the production line possible; no special protection required.
- Extremely compact: Only 1,6 m² floor space required.
- All safety relevant devices are standard features in the basic system configuration.
-
- **Certified for solar cell production.**



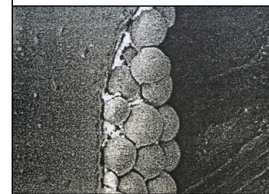
Screen stencils



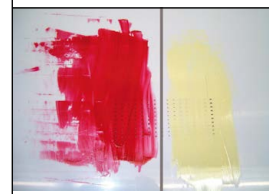
Stencils



M-TeCK stencils



Solder residues

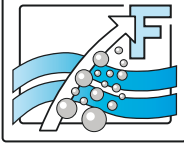


SMD adhesive

Applications

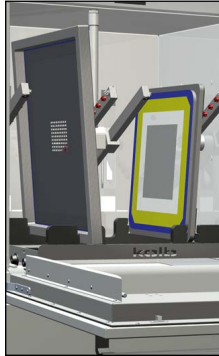
Kolb Cleaning Technology GmbH
 Karl-Arnold-Str. 12 · D - 47877 Willich
 Further information: www.kolb-ct.com

Tel. +49 (0) 2154 9479 - 38
 Fax +49 (0) 2154 9479 - 47
 e-mail info@kolb-ct.com



PSB700 V70 stencil cleaning system

Process chamber



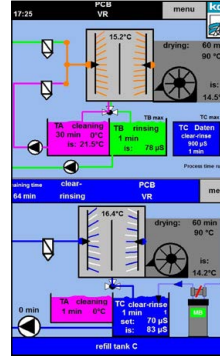
Loading



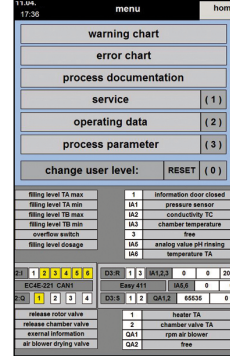
Operator panel



ClosedLoop



Monitoring



Function

Loading: The stencils are positioned in the fixture. After the loading the hatch will be closed and automatically safety locked at start. All relevant data of the fully automatic 4step process cycle is displayed on the touch screen monitor.

System control / configuration

PS700 V70 TWIN will be controlled by a PLC. Setting and monitoring will be entered/read out via the color touch screen (industry-PC with Windows CE). In the operator desktop there is a 3-stage program selector switch for different 4-stage cleaning programs. The applicable timings are freely adjustable in the PLC such as

1. SMD-Paste (Printer screens)
2. SMD-adhesive (PumpPrint-stencils)
3. Misprints

Maintenance

During the development of the PSB700 V70 special care was taken to ensure a comfortable and easy handling for the operator and the maintenance personnel. The system has a service access with a door at the right hand side. In this service area there are the pump-out set, the optional re-dosage unit (detergent container of 25 l), additive container of 5 l). Furthermore there is space for an optional resin cartridge for DI-water processing. Easily accessible behind the cover door are likewise the tanks for manual filling and servicing. The tank levels will be controlled automatically by the PLC which will indicate min-level or max-level with a respective warning. This PLC likewise controls pressure values of the fine filtration as well as the service and the maintenance cycles.

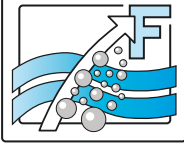
Standard equipment: Compression® drying, Duplex wash cart, fine filter tank A, X-Power pump unit,

Options / accessories: Exhaust unit, Re-dosage (detergent & additive), MediumWipe®, status light (3- or 5-fold), automatic rotor run control, water exchange / pump out for tank B / C, variable DI-processing unit, heater tank A, XL-Power pump unit, reservoir, MB/DI cartridge, PLC data and scanner unit, insulation, various carriers.

Please note: The cleaning system may only be operated with detergents and other raw materials and supplies certified by the manufacturer!

Kolb Cleaning Technology GmbH
 Karl-Arnold-Str. 12 · D - 47877 Willich
 Further information: www.kolb-ct.com

Tel. +49 (0) 2154 9479 - 38
 Fax +49 (0) 2154 9479 - 47
 e-mail info@kolb-ct.com



PSB700 V70 stencil cleaning system

PLC computer



Re-dosage



Maintenance



Reservoir



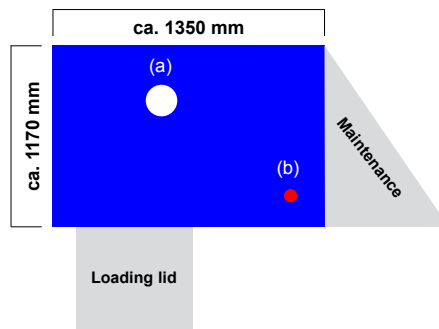
Exhaust unit



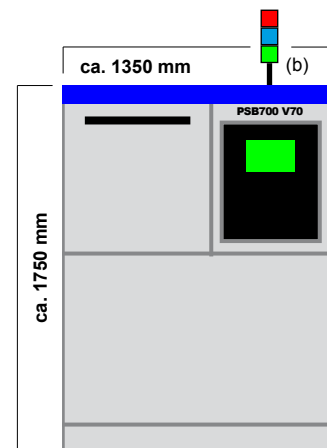
Technical data

Process chamber dimensions	:	W 700 • D 710 • H 720 mm
Capacity	:	2 screens / stencils 640 x 640 mm (25" x 25") or 710 x 585 mm (28" x 23")
Power supply	:	400 V AC 16 A CEE / 3Ph / 50 or 60 Hz
Power consumption / control system	:	approx. 4,1 kW / PLC (EATON)
Ambient Temperature (min. / max.)	:	approx. 20°C / 40°C
Tank contents cleaning	:	Tank A: approx. 55 l
Tank contents rinsing incl. saving step	:	Tank B / C: approx. 25 - 35 l
Exhaust connection (prov. by customer)	:	160 mm Ø > 200 to 300m ³ per hour
Connection water supply (tap water)	:	3/8", hose connection 14 mm (prov. by customer: inlet water quality < 350 µS conductance value (< 10° dH) or option descaling unit)
Connection water supply (DI- / VE water)	:	3/8", hose connection 14 mm (DI net prov. by customer or bridging to tap water)
Connection rinse water drain	:	3/4", hose connect. 25 mm with integrated pump out system
Noise	:	74 dB (A)
Weight	:	500 kg

Top view:
Max. space required
(a) = Exhaust (160 mm)
(b) = Status light



Front view:
With optional status light (b)



Certifications:

This system in its basic version was certified for its energy and watersaving processing, for easy operability and for the standard integration of comprehensive safety features.

