

PSB 700 V90 QUAD

Fully automatic XXL system for process safe fine cleaning of four screens, stencils or PumpPrints in one cleaning cycle from contaminations such as SMD-paste, SMD-adhesive, flux residues, oil, dust or grease.

Part No. 0905700-PSB-V90

XXL stencil cleaning system

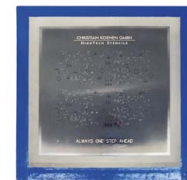


The situation

Efficient cleaning of screens and stencils is prerequisite for reproducible quality and thereby a perfect all over process in picking and placing. Due to the fourfold loading capacity of the process the **kolb PSB700 V90 QUAD** allows - in cooperation with modern aqueous detergents with hardly any unpleasant odors – highest cleaning efficiency and a widest possible process window. The system is economic, efficient, with high throughput and low running cost and can be installed at the production line.

The advantages of PSB700 V70 QUAD

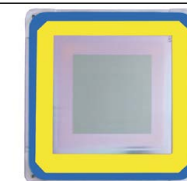
- Capacity: 4 screens / stencils 800 x 940 mm (31,5" x 37") per cycle.
- Short cycle time (approx. 4 min.) depending on detergent and contamination.
- Comfortable push-one-button operation.
- Fully automatic 4step process: cleaning, MediumWipe®, rinsing, compression® drying.
- Two tank combi system with two separate circuits.
- ClosedLoop reprocessing of cleaning and rinsing fluids as standard feature.
- VA wash cart.
- Vertical eightfold rotor system.
- Permanent rotor run control as an option.
- Process and service intervals PLC controlled.
- Event issuing and software control via touch screen.
- PLC data recording and importing by scanner possible.
- Fine filter system 10µm for the cleaning and rinsing process.
- Water-free operation possible: Due to the separate double tank configuration the system can operate with suitable cleaning / rinsing detergents for rinsing.
- Made of stainless steel, process sections are made of electrolysis resistant elements.
- Installation close to the production line possible; no special protection required.
- Extremely compact: Only 3m² floor space required.
- All safety relevant devices are standard features in the basic system configuration.



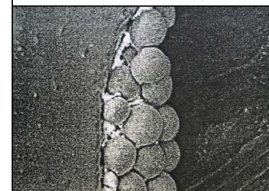
Sreen stencils



Stencils



M-TeCK stencils



Solder residues

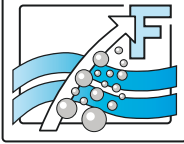


SMD adhesive

Applications

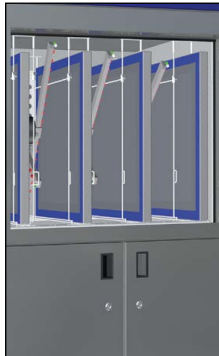
Kolb Cleaning Technology GmbH
 Karl-Arnold-Str. 12 · D - 47877 Willich
 Further information: www.kolb-ct.com

Tel. +49 (0) 2154 9479 - 38
 Fax +49 (0) 2154 9479 - 47
 e-mail info@kolb-ct.com



PSB700 V90 XXL stencil cleaning system

Process chamber



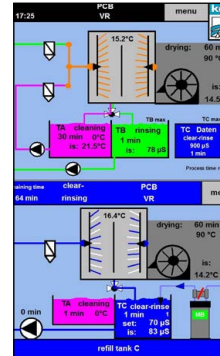
Loading



Operator panel



ClosedLoop



Monitoring

warning chart	
error chart	
process documentation	
service (1)	
operating data (2)	
process parameter (3)	
change user level: RESET (0)	
filling level TA max	1 information door closed
filling level TA min	IA1 pressure sensor
filling level TB max	IA2 conductivity TC
filling level TB min	IA3 chamber temperature
overflow switch	3 free
filling level coverage	IA5 analog value pH rinsing
	IA6 temperature TA
DI 1 2 3 4 5 6	DI-RS 1 2 IA1,2 3 4 5 6 7 8 9 10
ECHE-321 CAN1	Easy 411 IAS1 0 1 2 3
RS 1 2 3 4	DI-S 1 2 QM1,2 6002 0
release rotor valve	1 heater TA
release chamber valve	2 chamber valve TA
external information	QA1 rpm of blower
	QA2 free

Function

Loading: The stencils are positioned in the fixture. After the loading the sliding lock door will be automatically closed. All relevant data of the fully automatic 4step process cycle is displayed on the touch screen monitor.

System control / configuration

PS700 V90 QUAD will be controlled by a PLC. Setting and monitoring will be entered/read out via the color touch screen (industry-PC with Windows CE). In the operator desktop there is a 3-stage program selector switch for different 4-stage cleaning programs. The applicable timings are freely adjustable in the PLC such as

1. SMD-Paste (Printer screens)
2. SMD-adhesive (PumpPrint-stencils)
3. Misprints

Maintenance

During the development of the PSB700 V90 special care was taken to ensure a comfortable and easy handling for the operator and the maintenance personnel. The system has a service access with a door at the right hand side. In this service area there are the pump-out set, the optional re-dosage unit (detergent container of 25 l), additive container of 5 l). Furthermore there is space for an optional resin cartridge for DI-water processing. Easily accessible behind the cover door are likewise the tanks for manual filling and servicing. The tank levels will be controlled automatically by the PLC which will indicate min-level or max-level with a respective warning. This PLC likewise controls pressure values of the fine filtration as well as the service and the maintenance cycles.

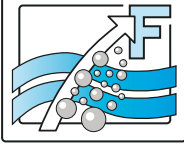
Standard equipment: Compression® drying, wash cart, fine filter tank A, XL-Power pump unit,

Options / accessories: Exhaust unit, Re-dosage (detergent & additive), MediumWipe®, status light (3- or 5-fold), automatic rotor run control, water exchange / pump out for tank B / C, variable DI-processing unit, heater tank A, descaling unit, reservoir, MB / DI cartridge, PLC data and scanner unit, insulation, various carriers.

Please note: The cleaning system may only be operated with detergents and other raw materials and supplies certified by the manufacturer!

Kolb Cleaning Technology GmbH
Karl-Arnold-Str. 12 · D - 47877 Willich
Further information: www.kolb-ct.com

Tel. +49 (0) 2154 9479 - 38
Fax +49 (0) 2154 9479 - 47
e-mail info@kolb-ct.com



PSB700 V90 XXL stencil cleaning system

PLC computer



Re-dosage



Maintenance



Reservoir



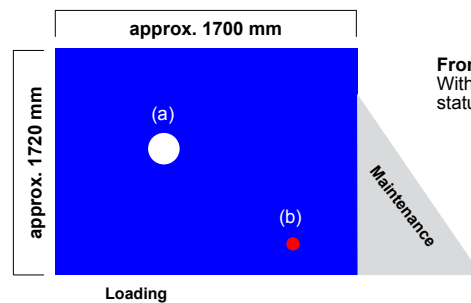
Exhaust unit



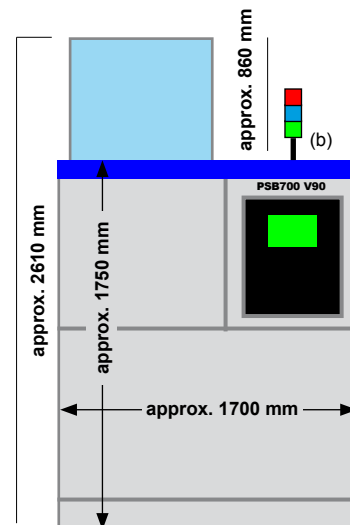
Technical data

Process chamber dimension	:	W 970 • DT 955 • H 900 mm
Capacity	:	4 screens / stencils 800 x 940 mm (31,5" x 37")
Power supply	:	400 V AC 32 A CEE / 3Ph / 50 or 60 Hz
Power consumption / control system	:	approx. 7,5 kW / PLC (EATON)
Ambient Temperature (min./max.)	:	approx. 20°C / 40°C
Tank contents clean, rinse incl. saving step	:	Tank A: approx. 100 - 125 l
Exhaust connection (prov. by customer)	:	160 mms Ø > 200 to 300m ³ per hour
Connection water supply (Tap water)	:	3/8", hose connection 14 mm (by cutomer: inlet water quality, < 350 µS conductance value (< 10° dH) or option descaling unit)
Connection water supply (DI /VE water)	:	3/8", hose connection 14 mm (DI net by customers or bridging to tap water)
Connection rinse water drain	:	3/4", hose connect. 25 mm with integrated pump out system
Noise	:	74 dB (A) with option insulation
Weight	:	950 kg

Top view:
Max. space required
(a) = Exhaust (160 mm)
(b) = Status light



Front view:
With optional status light (b)



Certifications:

This system in its basic version was certified for its energy and watersaving processing, for easy operability and for the standard integration of comprehensive safety features.

