

PS 300 HD-C

Fully automatic eco single-chamber-PowerSpray®
2Step compact cleaning system for products up to
780 x 860 mm, 31" x 34". Cleans stencils and possible
misprints from SMD-paste, dust, grease and oils.

Part No. 0905300-PS-HD-C

Compact stencil cleaning



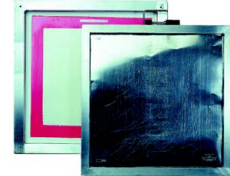
The situation

Best possible cleaning of screens / stencils (in electronics and solar cell production) and possible misprints today is the prerequisite for a reproducible quality in production as well as the reduction of expensive production stand-stills. The trend is the installation of highly automated, quick and cost-saving yet efficient and reliable processes that ensure high customer satisfaction. The development of kolb PS300 HD takes this into consideration for small quantities. The use of almost odourless solvent-free* waterbased detergents ensuring a highest possible cleaning efficiency today guarantees a secure and widest possible process window. The PS300 HD ist ideally applicable for small and medium businesses.

The advantages of PS300 HD:

- 2-tank system with communicating detergent tank.
- Suitable for cleaning products up to 780 x 860 mm (31" x 34").
- Fully automatic looped 2Step process with cleaning and drying.
- Comfortable single push button operation.
- PS-PowerSpray with magnetic coupled pumping unit.
- Drying with HotSpeed warm air drying.
- Process cycle times and maintenance intervals PLC-controlled.
- Permanent fine filtration system.
- Closed loop. No water connection, no waste water disposal necessary.
- No compressed air connection necessary!
- No explosion protection necessary, use next to the production line is possible.
- Front cover in stainless steel, side and rear covers in painted steel.
- Process sections made of electrolysis-resistant material.
- Noise level approx. 63 dB(A).
- Interlockable space-saving hinged door with window into the process chamber.
- Extremely compact: Small footprint - Euro pallet size (= < 1m²), height only 160 cms.

The system has to be operated with a rinsing suitable (RS-) cleaning detergent.



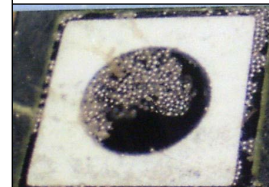
Stencils



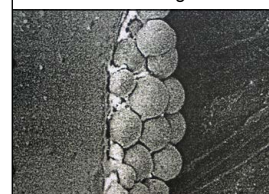
VectorGuard



LF-Carrier



Soldering residues



Soldering residues

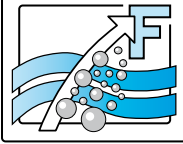
Applications

Contaminations

Kolb Cleaning Technology GmbH
Karl-Arnold-Str. 12 · D - 47877 Willich
Further information: www.kolb-ct.com

Tel. +49 (0) 2154 9479 - 38
Fax +49 (0) 2154 9479 - 47
e-mail info@kolb-ct.com

*Solvent = organic hydrocarbon, under normal conditions volatile, flammable and risk of explosion.



PS300 HD compact cleaning system

Hinged door



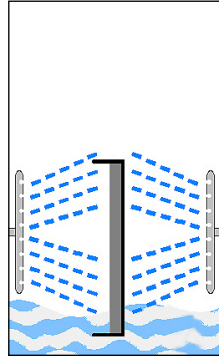
Loading



Operator desktop



Function



Maintenance



Function

The PS300 HD will be loaded by placing stencils directly into the process chamber where protective round bars on either side in front of the spray rotors prevent damages to the stencils in case of handling errors. After loading, the door will be closed manually and will be locked automatically after the START of the cleaning operation. The fully automatic 2Step cleaning process via the spray rotors will run down in the pre-selected cycle time:

- Step 1 Cleaning
- Step 2 Drying with HotSpeed warm air

PS300 HD allows the installation close to the production area and it is thus another vital element in the value-added chain.

Attention: Cleaning only with TS/RS-waterbased pH-neutral cleaning detergents qualified by the system manufacturer.

Programming / control

PS300 HD will be controlled by a PLC. The cycle time of the respective 2Step cleaning process is programmable in the PLC.

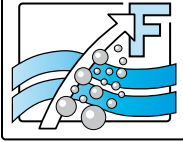
Service and maintenance

Special care was taken to ensure an easy maintenance in the shortest possible time. The tank level is easily controllable transparent inspection opening in the front of the system. Filling of the tank will be through the opened chamber door directly into the process chamber and from there into the tank underneath. In the maintenance and service area at the right-hand side of the system there is the fine filtration unit inline and the integrated pump-out unit. A manometer shows the filter pressure.

For cleaning requirements with higher contamination respectively with more than 5 - 10 cleaning cycles per day the use of systems with separate detergent and rinse water / detergent filtration (in contrast to the systems with one communicating detergent) is more economical. Taking into consideration a higher detergent consumption, the quality of cleaning and the life span, the kolb PS300 VL or PSB700 and PS07 TWIN might be even more applicable solutions in such cases.

Kolb Cleaning Technology GmbH
Karl-Arnold-Str. 12 · D - 47877 Willich
Further information: www.kolb-ct.com

Tel. +49 (0) 2154 9479 - 38
Fax +49 (0) 2154 9479 - 47
e-mail info@kolb-ct.com



PS300 HD compact cleaning system

Exhaust



Reservoir



LF-carrier



Cleaning carrier



Cleaning carrier



Options / accessories for PS300 HD:

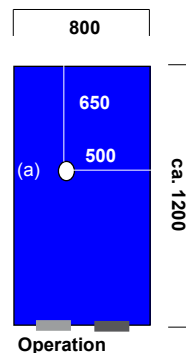
- Exhaust control with motor driven tight-closing flap valve to reduce to high extraction / too high consumption.
- Reservoir.
- Carriers: various sizes and configurations as per customer requirements.

Technical data:

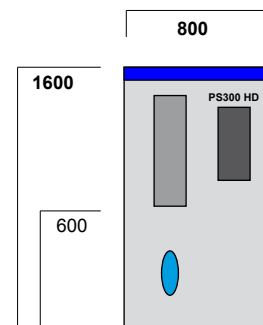
Power supply	:	standard 400 V, 16 A, CEE plug, L1, L2, L3, N, PE / 50 or 60 Hz
Power consumption	:	approx. 2.2 kW
Programming and control	:	PLC Siemens Logo
Ambient temperaturr (min. / max.)	:	20° C / 50°C
Noise	:	ca. 63 dB (A)
Weight	:	ca. 300 kg
Contents of the tank system	:	75 - 100 l (from model year 2015) TS / RS pH-neutral detergent
Option exhaust	:	connection w. capacity of about 200 - 300 m ³ / h necessary
Permanent filtration	:	100 / 50 / 10 µm

Foot print and max. space required for service and maintenance (in mms)

Top view:
Max. space required
(a) = Exhaust (160 mm)



Front view:
Max. space required



Certifications:

This system in its basic version was certified for its energy processing and for the standard integration of comprehensive safety features.

