

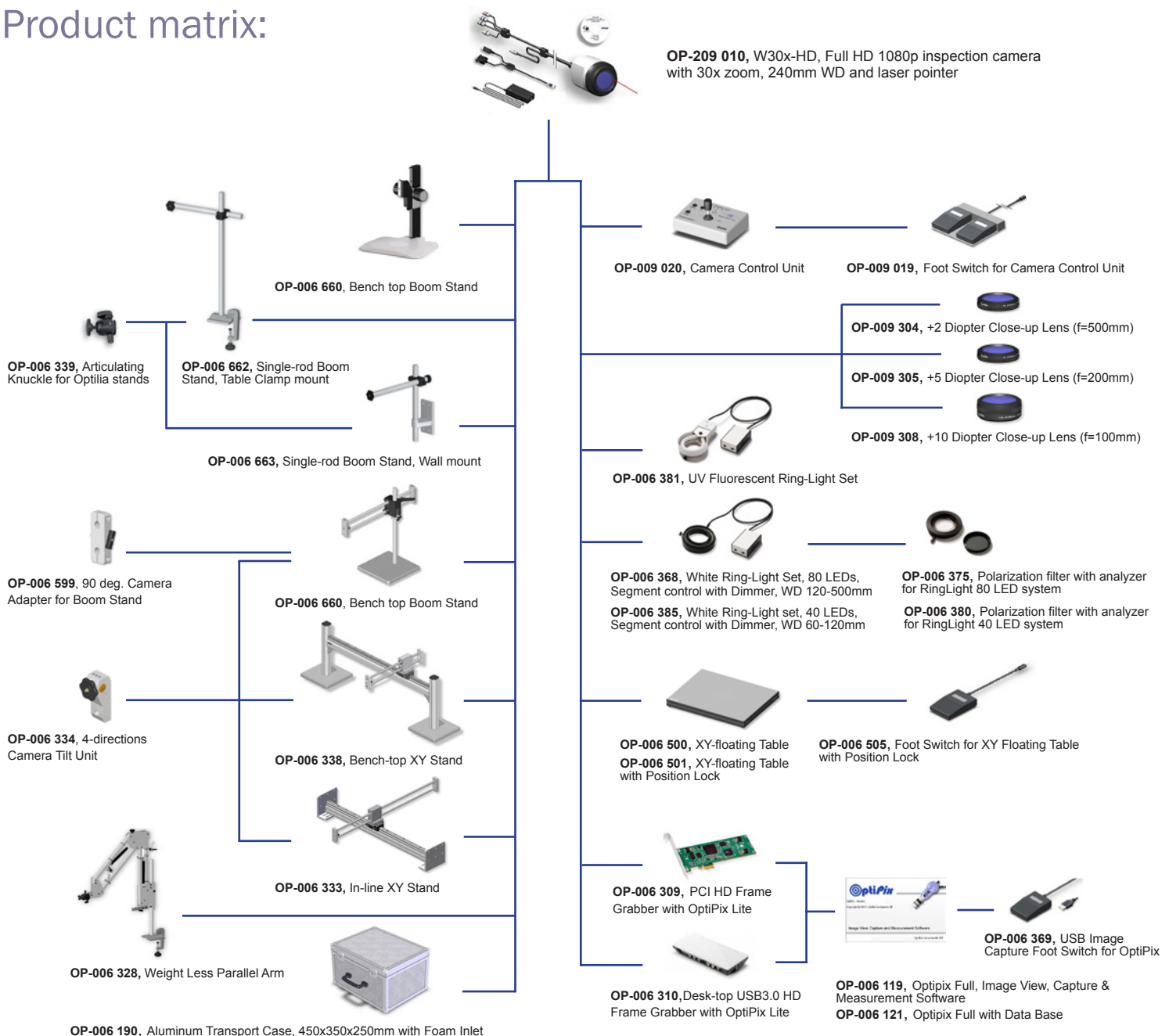
W30x-HD

High Definition 1080p Camera Microscope with x30 Optical Zoom and swift Auto-Focus



Versatile, scalable and ergonomic video camera microscope producing bright pictures for fast and reliable optical inspection. The W30x has a powerful 30x optical zoom, 60mm to 240mm working distance range and a swift auto focus for clear examination of your object in Full 1080p High Definition resolution. An extensive range of lenses, illuminations, software, mounting and stand configurations allows for versatile installation in all working situations.

Product matrix:



Technical specification:

- Image Sensor ○ 1/2.8" CMOS, ~ 3.2M pixels
- Picture Quality ○ Full HD 1080p (1920x1080)
- Output Signal ○ 1080/59.94i, 1080/50i, 720/59.94p, 720/50p, PAL, NTSC
- Optics ○ 30x optical zoom with auto focus, F1.6 to F14 (F4.7 to F14 at 30x)

- Working Distance (w/o Close-up) ○ ~ 210 - 240 mm
- Working Distance with +2 Close-up ○ ~ 145 - 160 mm
- Working Distance with +5 Close-up ○ ~ 95 - 110 mm
- Working Distance with +10 Close-up ○ ~ 60 - 70 mm

- Field of View at 1x zoom ○ ~ 272 x 153 mm (~ 1.9x magnification on 24" monitor)
- Field of View at 10x zoom ○ ~ 28 x 15.8 mm (~ 19x magnification on 24" monitor)
- Field of View at 30x zoom ○ ~ 9.4 x 5.3 mm (~ 55x magnification on 24" monitor)
- Field of View at 30x zoom +2 Close-up ○ ~ 6.3x 3.5 mm (~ 83x magnification on 24" monitor)
- Field of View at 30x zoom +5 Close-up ○ ~ 5.4 x 3.0 mm (~ 96x magnification on 24" monitor)
- Field of View at 30x zoom +10 Close-up ○ ~ 3.5 x 2.0 mm (~ 149x magnification on 24" monitor)

- Camera Control ○ Aluminum housing Control unit device with Joystick or PC Control Software via serial COM or USB port

- Adjustable Parameters ○ Optical zoom, iris, exposure (shutter speed), brightness, focus, white balance (colour), picture freeze, NIR-vision mode, image rotate, negative picture, save & recall, zoom factor display and cross line on live image.

- Laser Pointer ○ Red LED laser, 0,5mW output power, Laser Class 2

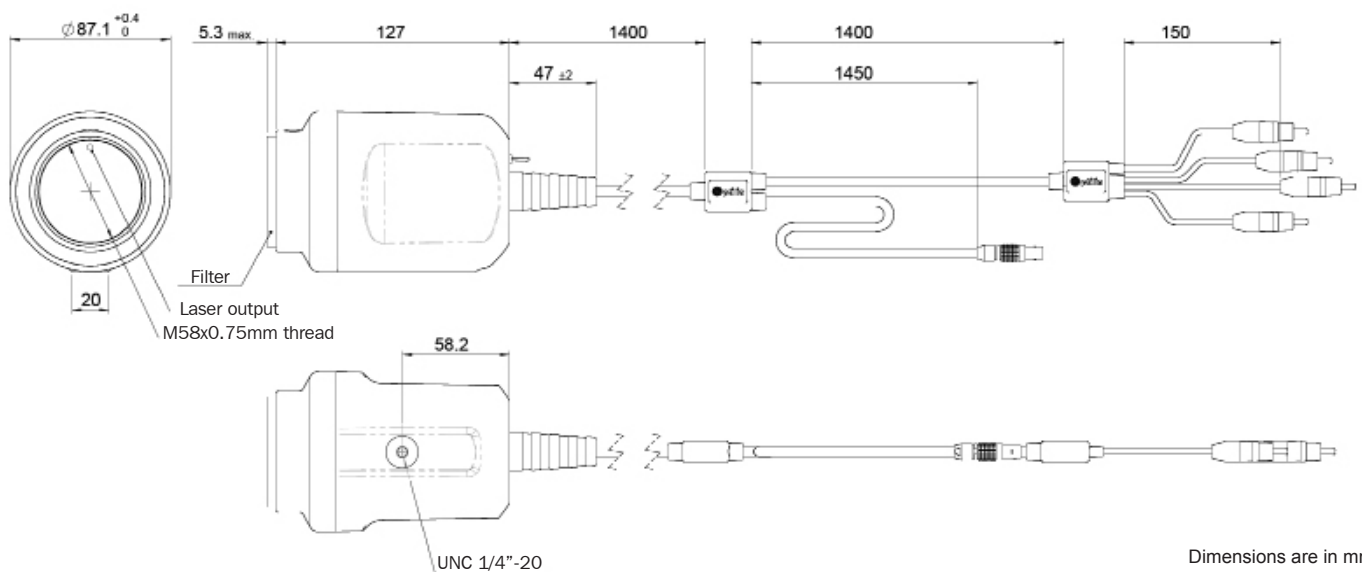
- Inputs ○ DC in and Serial RS-232 (via circular connector or 5-pin MiniDin DB9-F an COM-USB adapter)

- Outputs ○ HD Component Y/Pb/Pr Video out (RCA), PAL/NTSC Video out (RCA)

- Storage Environment ○ -20° - +60°C, 20 - 95% RH, non-condensing
- Operating Environment ○ -5° - +60°C, 20 - 95% RH, non-condensing
- Power Requirement ○ 12.0 VDC, 4.0 W max
- Weight of camera ○ 950 g. max (without stand and control unit)

- Model Options ○ W30x-HD (Standard)
- W30x-HD-E (ESD-protected)
- W30x-HD-M (Medical housing)

Dimensions:



Dimensions are in mm

Reseller:



Optilia Instruments AB
 Djupdalsvägen 22, SE-192 51 Sollentuna, Sweden.
 Phone: +46 8 35 33 60
 Email: info@optilia.eu
 Web: www.optilia.eu

Product matrix

Optilia HD Inspection Systems

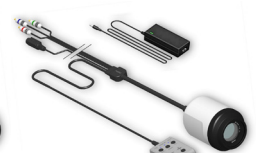
OP-209 010, W30x HD

OP-209 015, W30x FreeSight

OP-009 010, W10x HD

OP-109 013, M20x EasyView

OP-109 014, M20x FreeSight



OP-009 020, Camera Control Unit
OP-009 220, Camera Control Unit with Double Save/Recall, Cross-line and Zoom Display

OP-009 019, Foot Switch for Camera Control Unit

OP-006 660, Single-rod Boom Stand

OP-006 199, Double-rod Boom Stand

OP-006 599, 90 deg. Camera Adapter for Boom Stand

OP-006 500, XY-floating Table
OP-006 501, XY-floating Table with Position Lock

OP-006 505, Foot Switch for XY Floating Table with Position Lock

OP-006 663, Single-rod Boom Stand, Wall mount

OP-006 338, Bench-top XY Stand

OP-006 334, 4-directions Camera Tilt Unit

OP-006 502, All angles Tilt Table, Antistatic
OP-006 702, All angles Tilt Table with electromagnetic position lock, Antistatic

OP-006 662, Single-rod Boom Stand, Table Clamp mount

OP-006 333, In-line XY Stand

OP-006 109, Precision large-area XY-board ESD protected

OP-006 660, Bench top Boom Stand & **OP-006 661**, Height Extender

OP-006 201, Focusing stand for HD cameras

OP-006 328, Weight Less Parallel Arm

OP-009 080, SD-CAP Full HD SD-card Image Capture Device
OP-009 081, SD-CAP Full HD with Digital Graticule

OP-006 401, Foot Switch for Image Capture Device

OP-006 400, Digital Graticule (custom designed)

OP-009 304, +2 Diopter Close-up Lens (f=500mm)

OP-009 305, +5 Diopter Close-up Lens (f=200mm)

OP-009 308, +10 Diopter Close-up Lens (f=100mm)

OP-006 375, Polarization filter with analyzer for RingLight 80 LED system

OP-006 376, Diffuser for RingLight 80 LED system

OP-006 368, White Ring-Light Set, 80 LEDs, Segment control with Dimmer, WD 120-500mm

OP-006 370, Bright Field transmitted LED illumination kit

OP-006 387, Bright Field Polarized transmitted LED illumination kit with rotatable analyser

OP-006 700 HD Component to HDMI converter

OP-006 310, Desk-top USB3.0 HD Frame Grabber with OptiPix Lite

OP-006 608, Polarizer, Linear, 58mm

OP-006 382, Lens protection & UV filter, 58mm

OP-006 380, Polarisation filter with analyzer for RingLight 40 LED system

OP-006 383, Diffuser for RingLight 40 LED system

OP-006 385, White Ring-Light set, 40 LEDs, Segment control with Dimmer, WD 60-120mm

OP-006 378, Double-arm Spot-light incl. Segmental control unit and power supply

OP-006 309, PCI HD Frame Grabber with OptiPix Lite

OP-006 190, Aluminum Transport Case, 450x350x250mm with Foam Inlay
OP-009 335, Aluminum Transport Box 600x400x410mm with Foam Inlay

OP-006 119, Optipix Full
OP-006 121, Optipix Full with Data Base

OP-006 369, USB Image Capture Foot Switch for OptiPix

OP-006 381, UV Fluorescent Ring-Light Set

OP-006 388, Dark Filed transmitted LED illumination kit