

# 222D211 to 299

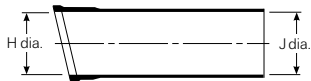
Right-angled, lipped boot



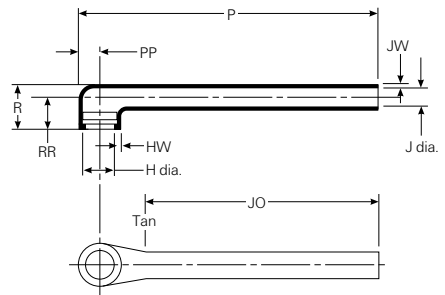
## Applications

Provides strain relief and mechanical protection between cable and connector. Boot is usually used on open-wire-bundle airborne harnesses, or applications where the long tail replaces cable jacketing removed during termination.

### As supplied (a)



### After unrestricted recovery (b)



Available in:

Americas

Europe

Asia Pacific



**Fax-on-demand**

US only (800) 260-9099

Outside US (650) 257-2301

**Fax ID**

3147

**Description**

SCD

Visit our website at [www.tycoelectronics.com](http://www.tycoelectronics.com)**Materials available**

Material*	Material description	Precoating no.	Adhesive part no.**
-3	Semirigid polyolefin	/42 or /86	S-1017 or S-1048
-4	Flexible polyolefin	/42 or /86	S-1017 or S-1048
-12	Viton	N/A	S-1255-04
-25	Fluid-resistant elastomer	/42 or /86 or /225	S-1017 or S-1048 or S-1125
-100	Polyolefin, Zerohal	/86 or /180	S-1030 or S-1048

J end coated only, S1030 tape  
supplied in bag for H end

\*For more information, please see the appropriate material page in this section.

\*\*For more information, please see Section 5 of this catalog.

**Product dimensions (mm/in)**

Part number	H		J			P
	Min.	Max.	Min.	Min.	Max.	±10%
	a	b	-3, -4, -25 a	-12, -100 b	b	b
222D211	22.4 (.88)	11.4 (.45)	22.4 (.88)	14.0 (.55)	6.4 (.25)	105.2 (4.14)
222D221	25.7 (1.01)	15.0 (.59)	25.7 (1.01)	16.0 (.63)	7.4 (.29)	124.0 (4.88)
222D232	29.5 (1.16)	18.8 (.74)	29.5 (1.16)	18.3 (.72)	8.4 (.33)	146.3 (5.76)
222D242	34.0 (1.34)	22.9 (.90)	34.0 (1.34)	21.3 (.84)	9.7 (.38)	172.2 (6.78)
222D253	37.3 (1.47)	29.5 (1.16)	37.3 (1.47)	23.1 (.91)	10.4 (.41)	185.2 (7.29)
222D263	43.7 (1.72)	34.0 (1.34)	43.7 (1.72)	27.2 (1.07)	12.2 (.48)	231.6 (8.41)
222D274	50.0 (1.97)	41.1 (1.62)	50.0 (1.97)	31.5 (1.24)	14.2 (.56)	224.5 (8.84)
222D285	62.7 (2.47)	47.0 (1.85)	62.7 (2.47)	39.1 (1.54)	17.5 (.69)	227.3 (8.95)
222D296	69.3 (2.73)	59.7 (2.35)	69.3 (2.73)	43.2 (1.70)	19.6 (.77)	233.4 (9.19)
222D299	81.8 (3.22)	67.1 (2.64)	81.8 (3.22)	51.1 (2.01)	22.9 (.90)	237.0 (9.33)

	R	JO	PP	RR	HW	JW
	Ref	±10%	±10%	10%		
	b	b	b	b	±20%	±20%
222D211	18.5 (.73)	87.6 (3.45)	6.9 (.27)	12.4 (.49)	1.52 (.06)	1.14 (.045)
222D221	19.8 (.78)	99.1 (3.90)	8.4 (.33)	15.0 (.59)	1.52 (.06)	1.14 (.045)
222D232	20.8 (.82)	114.3 (4.50)	10.4 (.41)	15.5 (.61)	1.78 (.07)	1.14 (.045)
222D242	21.8 (.86)	132.6 (5.22)	12.2 (.48)	15.7 (.62)	1.78 (.07)	1.14 (.045)
222D253	24.4 (.96)	143.8 (5.66)	15.5 (.61)	17.8 (.70)	2.03 (.08)	1.14 (.045)
222D263	27.4 (1.08)	169.2 (6.66)	18.3 (.72)	19.8 (.78)	2.03 (.08)	1.14 (.045)
222D274	29.5 (1.16)	173.2 (6.82)	21.1 (.83)	20.8 (.82)	2.29 (.09)	1.40 (.055)
222D285	33.3 (1.31)	168.1 (6.62)	24.1 (.95)	23.4 (.92)	2.54 (.10)	1.40 (.055)
222D296	35.1 (1.38)	157.2 (6.19)	30.0 (1.18)	23.6 (.93)	2.54 (.10)	1.40 (.055)
222D299	44.5 (1.75)	151.1 (5.95)	33.3 (1.31)	31.2 (1.23)	2.54 (.10)	1.40 (.055)

Note: Coating is optional. As supplied dimensions appearing in table are for uncoated parts. When coating is added, entry diameters will be reduced by 1.5 mm (.06") max.

**Users should independently evaluate the suitability of the product for their application.**  
**Before ordering check with factory for most current data.**