

AUX UTILISATEURS AYANT DES PROBLÈMES D'OXYDATION DE PANNES AVEC LA SOUDURE SANS PLOMB ET LA SOUDURE HAUTE TEMPÉRATURE



- ◆ RETIRE L'OXYDATION SANS ENDOMMAGER LES PANNES
- ◆ NE CONTIENT AUCUN PHOSPHATE, SANS DANGER POUR LA PANNE, LE CIRCUIT IMPRIMÉ, L'OPÉRATEUR ET L'ENVIRONNEMENT
- ◆ FAIBLE CONSOMMATION À PEINE 4.5W



HAKKO FT-700 TIP POLISHER

MODELE N°	HAKKO FT-700
CONSOMMATION	4.5W : 3W (100V)
DIMENSIONS—POIDS	70X54X 101/ 0.65 Kg



HAKKO FS-100 CHEMICAL PASTE

MODELE N°	HAKKO FS-100
QUANTITÉ	10 GR
CONTENU	CREME , FLUX, ETAIM

Tip Cleaner and Polisher

HAKO FT-700 TIP POLISHER

Tip Polisher



- Soldering tip polisher best suited to the removal of oxidation on soldering tips
- Prevents the shortening of the service life of tips caused by oxidation.

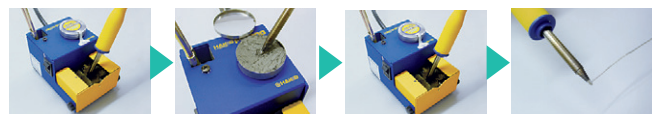
Usage



Oxidized tip

Polished and retinned tip

Cleaning procedure



1. Remove the oxidation.

2. Quickly retin the tip.

3. Remove the chemical paste attached to the tip end.

4. Feed the solder wire to the tip.

* Approximately 300°C is the most suitable temperature for cleaning the tips.



Use the brush to remove tough oxide.

Packing List

FT-700	Unit, Paste, Brush, Instruction manual
--------	--

Specifications

Model No.	FT-700
Power consumption	3 W (100 V), 4.5 W (110-120 V, 220-240 V)
Dimensions	70 (W) × 54 (H) × 101 (D) mm
Weight*	0.65 kg

* Without cord

• Chemical paste

Amount	10 g
Ingredients	Flux, tin (Sn) 50 wt% (each)

* The flux component of chemical paste consists of alicyclic amine hydrobromate, aliphatic amine hydrobromate, petrolatum, and wax.

HAKO FS-100 CHEMICAL PASTE

Chemical Paste



- Chemical paste best suited to the removal of oxidation on soldering iron tips
- Also used for retinning of soldering tips

Packing List

FS-100	Paste, Instruction manual
--------	---------------------------

Specifications

• Chemical paste

Amount	10 g
Ingredients	Flux, tin (Sn) 50 wt% (each)

* The flux component of chemical paste consists of alicyclic amine hydrobromate, aliphatic amine hydrobromate, petrolatum, and wax.